



# ACCα (phospho Ser80) Polyclonal Antibody

<b>Catalog No</b>	YP-Ab-02403
<b>Isotype</b>	IgG
<b>Reactivity</b>	Human;Mouse;Rat
<b>Applications</b>	WB;IHC;IF;ELISA
<b>Gene Name</b>	ACACA
<b>Protein Name</b>	Acetyl-CoA carboxylase 1
<b>Immunogen</b>	The antiserum was produced against synthesized peptide derived from human Acetyl-CoA Carboxylase around the phosphorylation site of Ser80. AA range:46-95
<b>Specificity</b>	Phospho-ACCα (S80) Polyclonal Antibody detects endogenous levels of ACCα protein only when phosphorylated at S80.
<b>Formulation</b>	Liquid in PBS containing 50% glycerol, 0.5% BSA and 0.02% sodium azide.
<b>Source</b>	Polyclonal, Rabbit,IgG
<b>Purification</b>	The antibody was affinity-purified from rabbit antiserum by affinity-chromatography using epitope-specific immunogen.
<b>Dilution</b>	WB: 1/500 - 1/2000. IHC: 1/100 - 1/300. ELISA: 1/5000.. IF 1:50-200
<b>Concentration</b>	1 mg/ml
<b>Purity</b>	≥90%
<b>Storage Stability</b>	-20°C/1 year
<b>Synonyms</b>	ACACA; ACAC; ACC1; ACCA; Acetyl-CoA carboxylase 1; ACC1; ACC-alpha
<b>Observed Band</b>	280kD
<b>Cell Pathway</b>	Cytoplasm, cytosol .
<b>Tissue Specificity</b>	Expressed in brain, placenta, skeletal muscle, renal, pancreatic and adipose tissues; expressed at low level in pulmonary tissue; not detected in the liver.
<b>Function</b>	catalytic activity:ATP + acetyl-CoA + HCO(3)(-) = ADP + phosphate + malonyl-CoA.,catalytic activity:ATP + biotin-carboxyl-carrier protein + CO(2) = ADP + phosphate + carboxybiotin-carboxyl-carrier protein.,cofactor: Binds 2 manganese ions per subunit.,cofactor: Biotin.,disease: Defects in ACACA are a cause of ACACA deficiency [MIM:200350]; also called ACAC or ACC deficiency. ACACA deficiency is an inborn error of de novo fatty acid synthesis. The disorder is associated with severe brain damage, persistent myopathy and poor growth.,enzyme regulation: By phosphorylation.,function: Catalyzes the rate-limiting reaction in the biogenesis of long-chain fatty acids. Carries out three functions: biotin carboxyl carrier protein, biotin carboxylase and carboxyltransferase.,online information: Acetyl-CoA carboxylase entry, pathway: Lipid metabolism; malonyl-CoA biosynthesis; malonyl-CoA from acetyl-CoA: st



## Background

Acetyl-CoA carboxylase (ACC) is a complex multifunctional enzyme system. ACC is a biotin-containing enzyme which catalyzes the carboxylation of acetyl-CoA to malonyl-CoA, the rate-limiting step in fatty acid synthesis. There are two ACC forms, alpha and beta, encoded by two different genes. ACC-alpha is highly enriched in lipogenic tissues. The enzyme is under long term control at the transcriptional and translational levels and under short term regulation by the phosphorylation/dephosphorylation of targeted serine residues and by allosteric transformation by citrate or palmitoyl-CoA. Multiple alternatively spliced transcript variants divergent in the 5' sequence and encoding distinct isoforms have been found for this gene. [provided by RefSeq, Jul 2008],

## matters needing attention

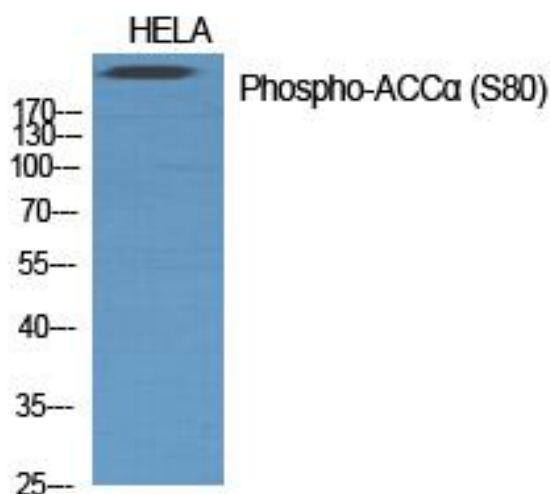
Avoid repeated freezing and thawing!

## Usage suggestions

This product can be used in immunological reaction related experiments. For more information, please consult technical personnel.

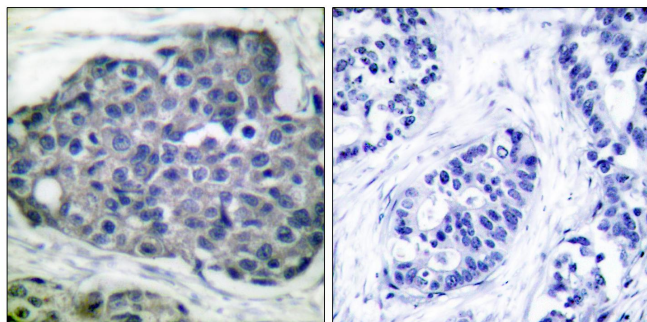
## Products Images

Western Blot analysis of various cells using Phospho-ACCα (S80) Polyclonal Antibody diluted at 1:1000



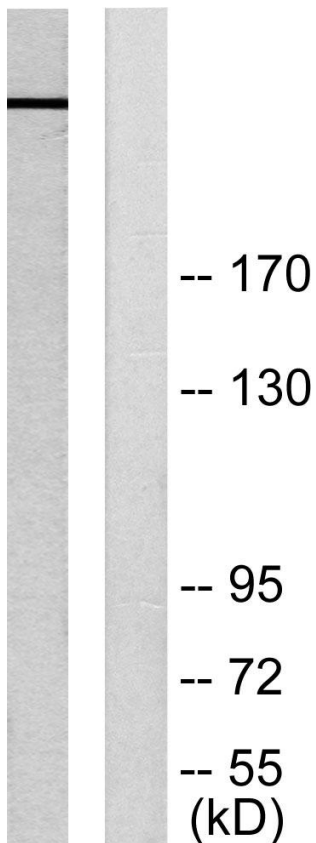
The picture was kindly provided by our customer





Immunohistochemistry analysis of paraffin-embedded human breast carcinoma, using Acetyl-CoA Carboxylase (Phospho-Ser80) Antibody. The picture on the right is blocked with the phospho peptide.

acetyl-CoA  
carboxylase --  
(pSer80)



Western blot analysis of lysates from 293 cells treated with EGF 200ng/ml 5', using Acetyl-CoA Carboxylase (Phospho-Ser80) Antibody. The lane on the right is blocked with the phospho peptide.